

Bike Delaware 2010 Year in Review



Advocacy and organizational achievements in the state of Delaware

**By Frank Warnock
Edited by Carol Ireland
February 2, 2011**

2/2: Bike Delaware Incorporates



It is official! Bike Delaware, Inc. was officially incorporated in the state of Delaware as a non-profit organization, effective February 2nd, 2010. The purpose of the organization as stated on the certificate of incorporation is:

- 1) To identify, prioritize and communicate local bicycle issues with the local bicycling community and with other local and governmental organizations;
- 2) To educate the bicycling community of bicycling laws and the legal status of bicyclists;
- 3) To promote safe, defensive bicycling throughout Delaware.

Bike Delaware, Inc. is now a membership organization and will elect its Board of Directors in accordance with established Bylaws.

We are pursuing filing the required governmental form to the IRS for Section 501(c)(3) status so that donations to our organization can be tax deductible as allowed by law. It was our intent to acquire this status by mid-2010, but is still in progress. Special thanks to Sally Humphrey, Delaware Greenways, for her facilitation and Glen Trudel with the law firm, Connolly Bove Lodge & Hutz, for his legal counsel.



National Bike Summit: March 9-11



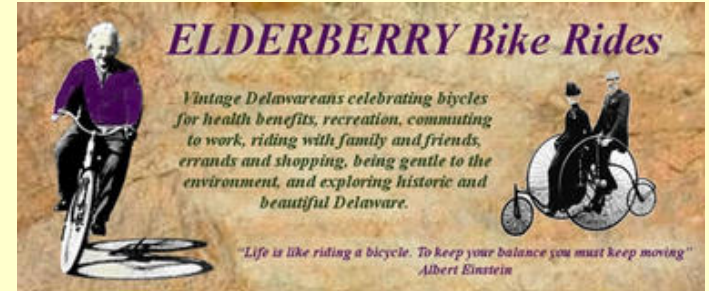
Left to right: Mark Chura (DE Greenways), Jim Ireland (DE Trail Spinners), Mark Loch (DE Trail Spinners), James Wilson (Bike DE), Frank Warnock (Bike DE), Amy Wilburn (DE Bicycle Council), Drew Knox (Bike DE)



Ten years ago, the first National Bike Summit brought just over 100 advocates and industry leaders to Washington, D.C. This year, the League of American Bicyclists had closer to 1,000 participants, and the impact was overwhelming. The goal was for bicycling to be prominently featured in important pieces of national legislation, documents, funding streams and programs.

Bike Delaware was there. We joined hundreds of fellow advocacy organizations from around the U.S, speaking up for bicycling at the national level. We helped the League of American Bicyclists celebrate 10 years of progress, propelling us into our best decade yet. This included walking the halls of Congress and paying visits to our elected representatives on March 11. We asked them to support the Active Community Transportation Act, as well as federal transportation, climate change, and other initiatives that will get more people on bikes more often.

4/7: Elderberry Bike Rides Launched



Bike Delaware launched a campaign to get Delaware citizens back in the saddle again for safe and leisurely organized bike rides throughout the state. Vice President Caroline Honse organized **Elderberry Bike Rides**, designed for people of all ages and bike riding abilities to participate in group rides where they can learn safe bike riding practices while enjoying the beautiful scenery and historical areas of Delaware. The target groups for the 2010 Spring, Summer, and Fall Rides were families with kids, senior citizens, and others who haven't biked in years and are a bit hesitant about taking on the longer, faster, group rides offered by other bike clubs in Delaware.

6/5: First Tabling Event, Newark Night



On June 5th, Newark closed down Main Street for a city-wide festival of vendors, organizations, and non-profit groups to share a day with thousands of Delaware residents. Bike Delaware was there, along with the Newark Bicycle Committee, Delaware Bicycle Council, and Delaware Greenways. We shared information with cyclists and families looking for information on where to bike in Delaware, how to ride safely, and where could they find other cyclists to bike with on slow, medium, or fast bike rides.

Position Statements and Projects

Improving Non-Motorized Safety and Mobility with Infrastructure at Arterial Road Signalized Intersections

After a pedestrian fatality at SR273 and Brownleaf Road on April 6, Bike Delaware organized an informal working group to consider the non-motorized safety and mobility issues raised by the tragedy. We concentrated on the narrow question of infrastructure counter measures for improved safety and mobility of non-motorized users of arterial road signalized intersections. Time was spent reviewing all the scholarly and governmental research we could find on this specific technical issue. It was presented to Karen Peterson, Senate Transportation Committee Chair, as well as engineers within DelDOT's Traffic Department.



Bike Lanes at Intersections with Right Turn-Only Lanes

After several weeks of study, data collection, committee input, and multiple revisions, Bike Delaware's position statement titled "Bike Lanes at Intersections with Right Turn-Only Lanes" was completed and submitted to DelDOT on November 17. The main purpose is to provide supporting data and justification for properly designed bike lanes through intersections, or a "pocket lane" retrofit where there is insufficient width to incorporate a standard 5' bike lane. It also defines Bike Delaware's position on bike lane width as it relates to different posted speed limits. The goal is to have the retrofit added to the Delaware MUTCD and DelDOT's Road Design Manual.



Position Statements and Projects

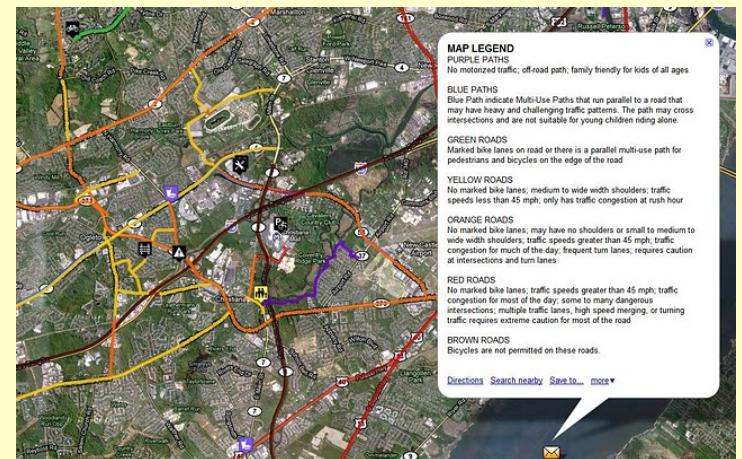
Repair of Bicycle-Insensitive Red Lights

Bike Delaware, together with DelDOT's Mark Luszcz and Steve Treut as a collector, launched an effort on November 10 to repair bicycle-insensitive red lights. Appearing as a news item, several faulty loop detectors (hardware used to detect vehicle presence) were reported, including those found at intersections crossing Kennett Pike, Yorklyn Rd, SR273 (Brownleaf), and Wrangle Hill Rd. DelDOT's turn around time was very prompt, with repairs performed within days of notification. The campaign highlighted the great working relationship Bike Delaware has not only with DelDOT Planning, but Traffic as well. It also served as an educational opportunity for how to trip a red light to green with correct placement of the bike over the loop detector.



On-Line Interactive Road and Trail Map

Bike Delaware will provide a thoroughly researched rating system for roads and trails that will help people decide where to ride for leisure or commuting to work or shopping. Using Google Maps, every road in Delaware will be rated by cyclists for bicycling, and will be designed to match riding ability with roads and trails that suit their needs and abilities. A printed version will also be produced annually for distribution by Bike Delaware. Estimated completion: Spring 2011.



Delaware Bicycle-Friendly Achievements

Bike Delaware contributed to some of these, and applauds all the organizations that played a role in 2010 in making Delaware more bike friendly.

4/28: First BFC Award for Delaware

Washington, DC - The League of American Bicyclists proudly announced 16 new Bicycle Friendly Communities (BFC), five renewing BFCs and 19 Honorable Mentions. In the last few cycles, the majority of the new BFCs were in the East and Midwest - three quarters of the awarded communities are east of the Mississippi River. Additionally, two new states now have designated BFCs: **Newark, Del.** and Simsbury, Conn.



5/17: Delaware Takes Bronze BFS

Four new states have been awarded the Bicycle Friendly States designation, and two states received an "Honorable Mention" - Oregon (Silver), **Delaware** (Bronze), New Jersey (Bronze), Massachusetts (Honorable Mention), Florida (Honorable Mention), and Maryland (Honorable Mention). Along with last year's winners, these states show what can be done to promote bicycling through model policies, programs, and a built environment that accommodates bicyclists of all ages and abilities. "Change at the state level is harder to see than in a community or business, but is no less important - and we are seeing real progress", according to Andy Clarke, League President.



Delaware Bicycle-Friendly Achievements

Wilmington Bicycle Advisory Committee

The Wilmington Bicycle Plan is a planning and policy framework to make Wilmington more bicycle-friendly and aligns with the City's recent agenda for sustainability and addressing global climate change, along with a city-wide health initiative. The Plan was developed in coordination with the City of Wilmington, a steering committee, and the general public. The Plan has sought to lay the groundwork for Wilmington to become a first-class destination for recreational cyclists and bicycle commuters. The Plan introduces a proposed coordinated bicycle network that will connect residents with surrounding neighborhoods, the downtown central business district, and other key destinations.



8/2: First HAWK signal in Delaware

Those taking agricultural classes on UD's Webb Farm returned from Summer vacation to find a new kind of traffic signal. One meant to make it easier and safer for students, faculty members, and visitors to cross Route 72 at Farm/Webb Lane. The signal is a High-intensity Activated crossWalk (HAWK) and was installed as a joint partnership between the Delaware Department of Transportation (DelDOT) and the University of Delaware's College of Agriculture and Natural Sciences. The location is the first in the state to be outfitted with this new type of signal.



Delaware Bicycle-Friendly Achievements

Aug: Phase 1, Industrial Track Rail Trail

The New Castle Industrial Track Rail Trail was recently built with American Recovery and Reinvestment Act funds and runs north from old New Castle to a little ways beyond Boulden Blvd, where it terminates in a dead-end. The "New Castle Industrial Track/ECGW: Boulden Blvd little league-Wilm Riverwalk" project will ultimately connect these now isolated paths, leveraging investments already made and providing a non-motorized connection between Wilmington and New Castle.



8/12: Vulnerable Users Law

On August 12, Delaware's Governor Markell signed SB 269 into law. The bill, modeled after an Oregon law, enhances the penalty for drivers convicted of careless or inattentive driving who cause serious physical injury to cyclists, pedestrians and other vulnerable road users. The new law includes sentencing guidelines such as completion of a traffic safety course, performing up to 100 hours of community service related to driver improvement and providing public education on traffic safety, fines up to \$550, and suspension of driving privileges.



Delaware Bicycle-Friendly Achievements

8/26: St. Georges Bridge Bike Lanes

Governor Jack Markell and Transportation Secretary Carolann Wicks joined Federal and state officials, and bicycle advocates at a ceremony to recognize the newly completed bike lanes on the St. Georges Bridge across the Chesapeake & Delaware Canal. Governor Markell led an excited group of cyclists on a 2.5 mile ride over the bridge and back.

Senator Thomas R. Carper, Congressman Michael N. Castle, U.S. Army Corps of Engineers District Commander, Lt. Philip Secrist, and Amy Wilburn, Chair of the Delaware Bicycle Council took part in the event on the grounds of the Commodore MacDonough School.



Century Rides Score Record Attendance

The Shore Fire Century on Saturday, **August 28** was a fabulous success. The White Clay Bicycle Club had a record turnout - more than 850 riders. Some came from as far away as Florida and Michigan. This broke the event's previous mark by over 200

The 24th Annual Amish Country Bike Tour on **Sept 11** surpassed all expectations and records with a pre-registration of 1,200+ cyclists. The previous pre-registration high was 645 in 2008. In total, they had 1,309 cyclists who participated.



Delaware Bicycle-Friendly Achievements

10/14: First Annual Trails Summit

DNREC'S Division of Parks and Recreation sponsored the first Delaware Trails Summit on Oct 14 in Rehoboth Beach. The summit marked the first time recreational trail groups, advocates and users came together statewide to learn about the progress made in creating a statewide network of trails, and to develop strategies for envisioning, planning, funding, designing, constructing, and managing recreational trails in Delaware.



11/15: First Sharrows in DE

The very first sharrows in the entire state of Delaware have appeared on Market Street in Wilmington. The city has put up "Bike Route" signs and installed post/ring bike racks along the sidewalk, in sight of the city's security camera network.

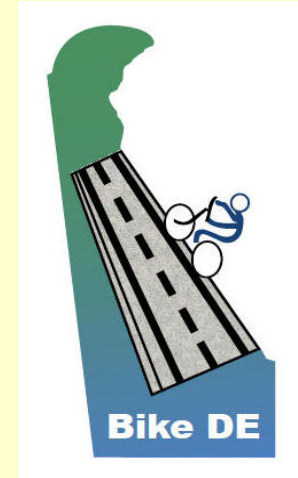
The central core of Market Street is a former pedestrian mall, and was converted to a traffic calmed main street about a decade ago. Hopefully, this will be the first implementation project of many for the Wilmington Bicycle Plan.



2010 Goals - Hit or Miss?

Hits:

- Support 2010 Bike Summit
- Continue Newark Bicycle Committee support
- Carry out at least one major PR event (2)
- Distribute Bike DE materials in bicycle shops, other
- Add Constituents (4)
- Complete Bike Delaware Survey #2
- Commuter Spotlight Page
- Join the Alliance for Biking and Walking
- Attend Pro Walk Pro Bike Conference
- Integrate with Social Media (Twitter)



In Progress:

- Develop on-line, interactive Delaware bicycle maps
- Develop and distribute Bike Delaware safety brochures
- Advocate fully featured, DelDOT approved MUTCD
- Complete Incorporation and 501c3 status

Misses:

- Exceed 200 members (191)
- Obtain additional major sponsor(s)

2011 Goals

Focus on State DOT, Bike/Ped earmark (3% dedicated from transportation fund)

Secure Bicycle Lanes Through Right Turn-Only lanes (MUTCD)

Monitor progress and promote Complete Streets

Produce bike-friendly maps

Increase Elderberry Rides

Support Newark (NBC), Wilmington (WBAC) Bicycle Committees

Continue participation in National Bike Summit, with additional delegates

Sponsor bicycle traffic design training for traffic engineers

Prep to take over Delaware Bike Summit in 2012

Grow Bike Delaware as an organization:

- * Revamp Website
- * Hire Executive Director
- * Double size of Board of Directors
- * Drive participating membership
- * Increase Treasury
- * Increase geographic diversity of members and board
- * Secure 501(c)3 status

Bike Delaware's Supporters, Board Members Through 2010

Primary Sponsorship

White Clay Bicycle Club

Individual Donations

John Bare

John Boyle

Lauren Clark

Tom C Davis III

Art Donner

Martin Drinan

Corinth Ford

Susan Garcia

Carol Ireland

Drew Knox

William Pfaffenhauser

Frank Warnock

John Watson

James Wilson

Logistical Support

WILMAPCO (meetings, knowledge)

Delaware Greenways (incorporation)

Board of Directors

Caroline Honse

Vice President

Carol Ireland

Treasurer

Drew Knox

President

Maria Ruocco

Secretary (past)

Frank Warnock

Public Relations

James Wilson

Staff (past)