

# Fatal Pedestrian Crashes on Delaware Highways



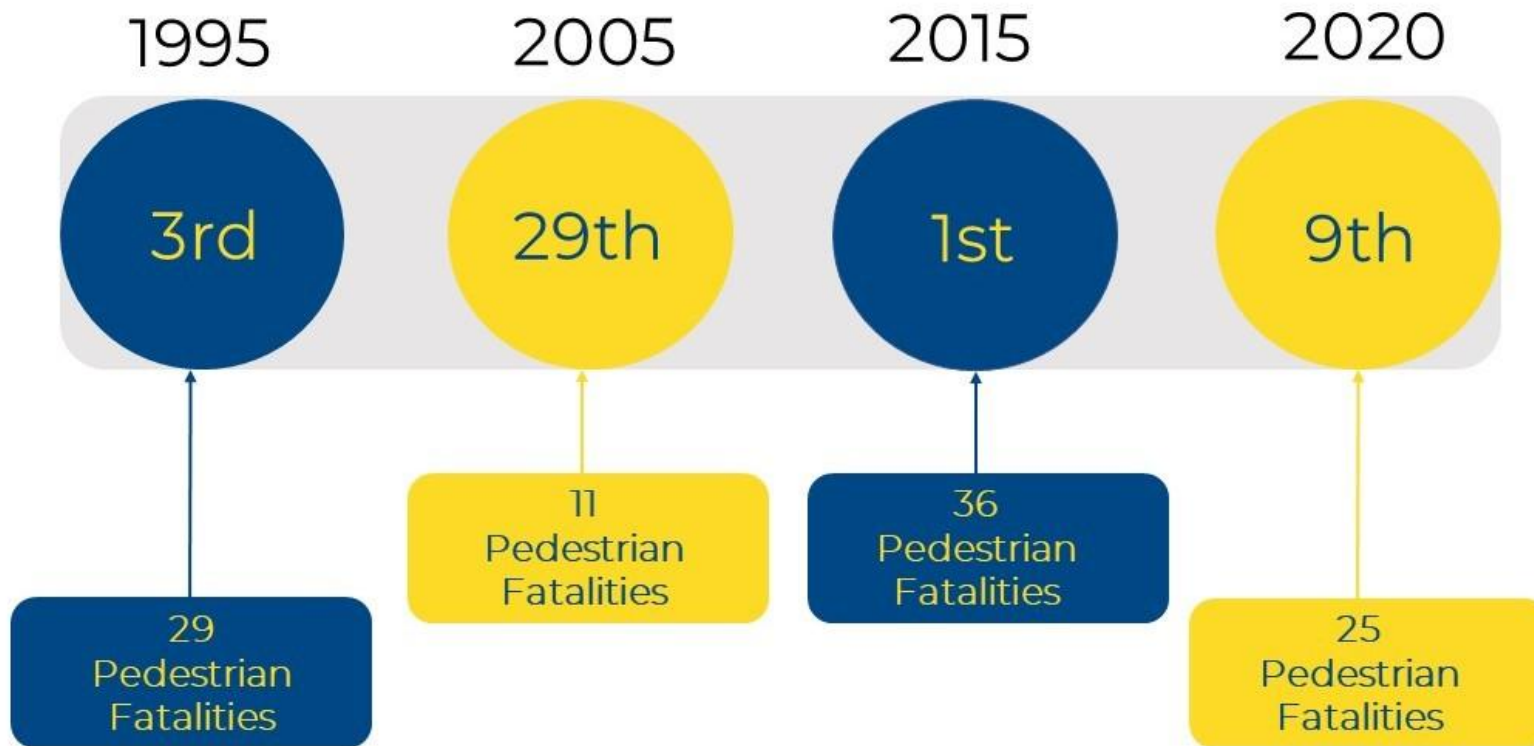
Presented at:  
2023 Everyone Gets Home Summit

Consultant Team:

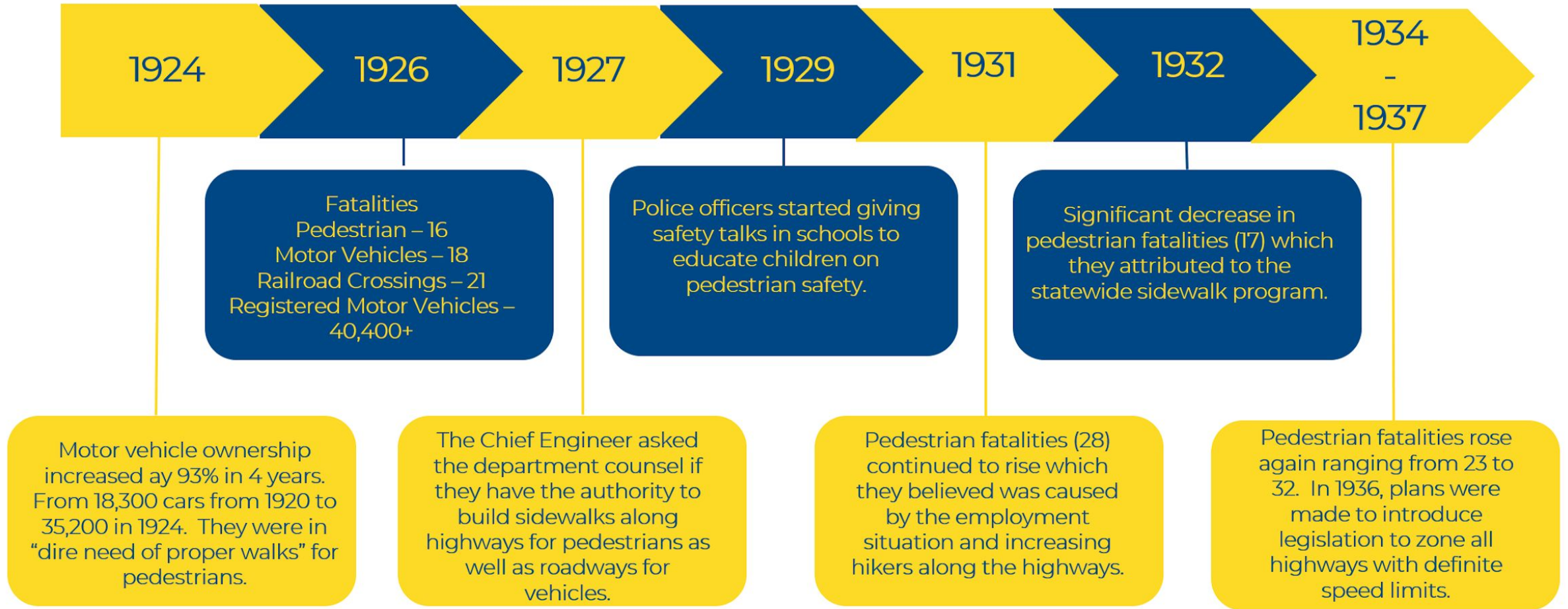




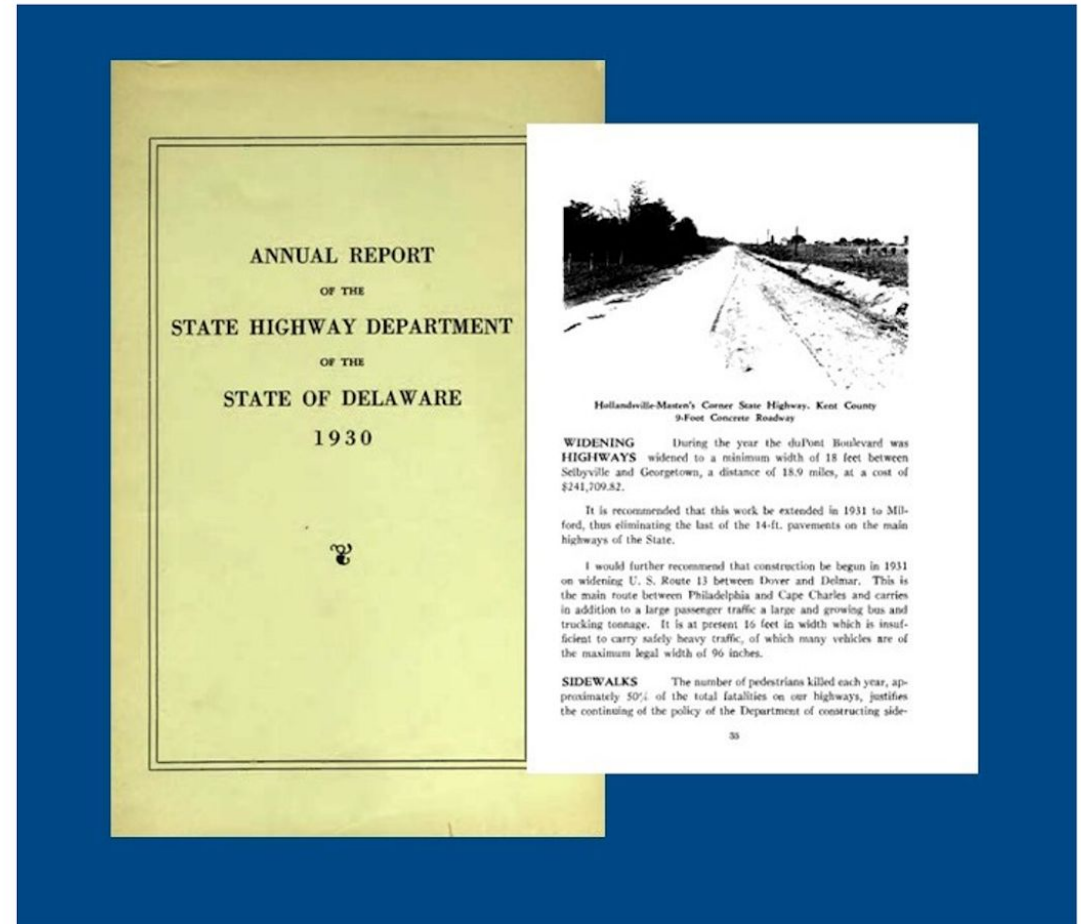
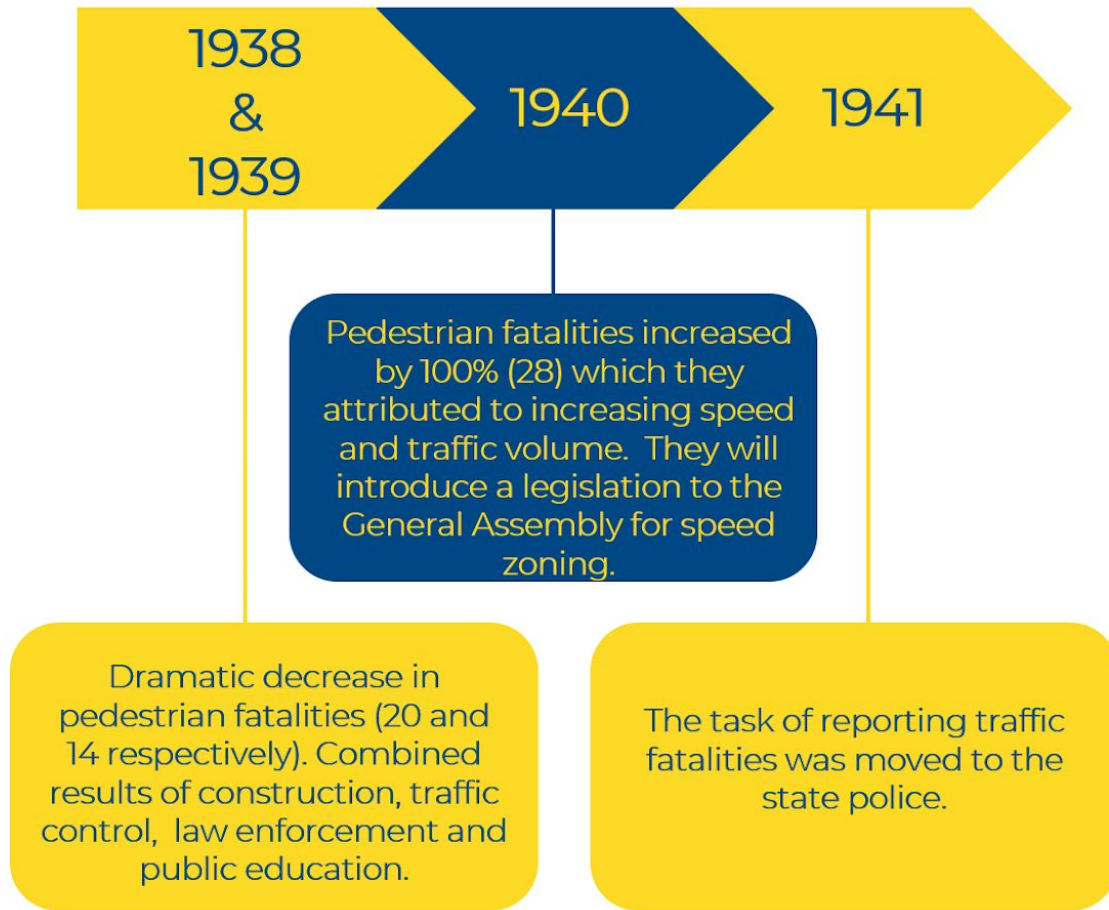
# Delaware Ranking As Per NHTSA Data



# History of Pedestrian Crashes in Delaware

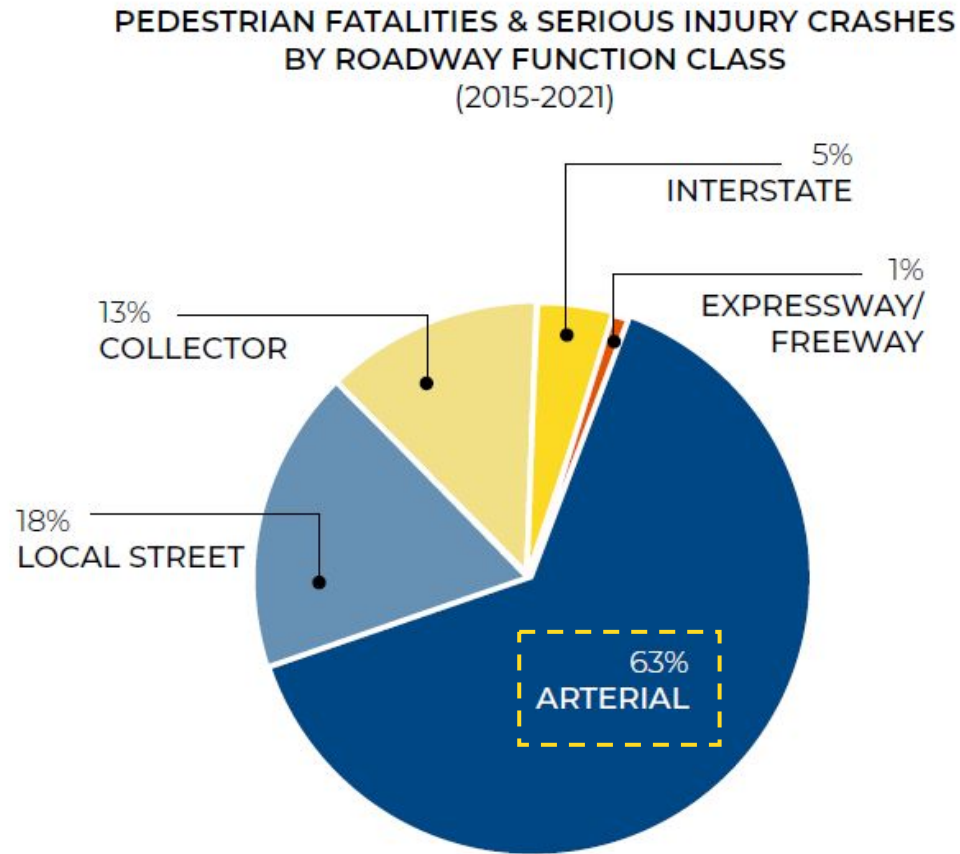


# History of Pedestrian Crashes in Delaware





# Where Pedestrian Crashes Occur



**88%**

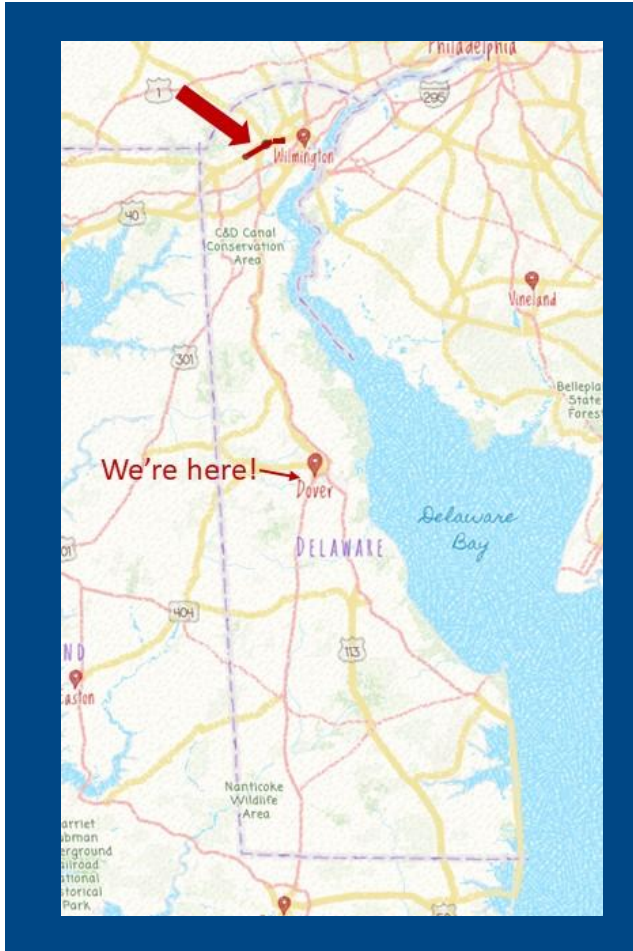
ON URBAN  
ROADWAYS

**76%**

AWAY FROM  
INTERSECTIONS

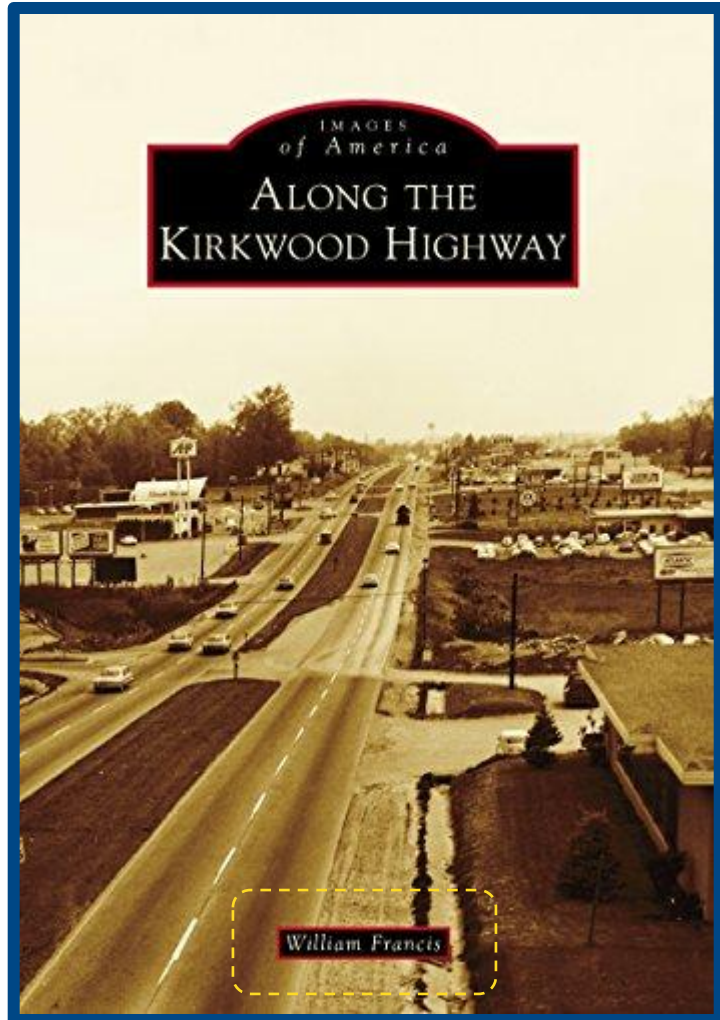


# Case Study: Kirkwood Highway





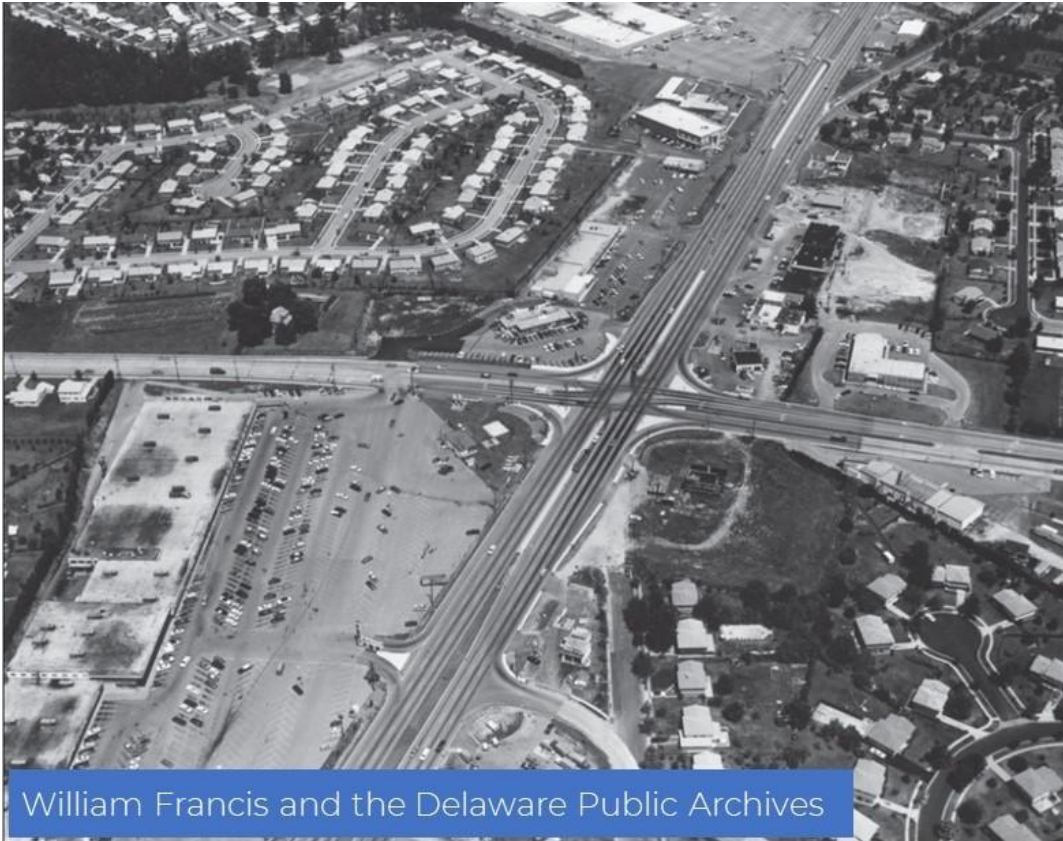
# Kirkwood Highway



- Planning started in the early 1930s
- Construction began in 1938 of what was then known as Lincoln Highway
- Completed and renamed Robert Kirkwood Highway in 1941
- Currently part of SR2 serving as major east/west route
- Urban principal arterial, divided six-lane highway
- 2018 AADT ~ 40,000, 45 mph
- There are sidewalks on both sides in general



# Kirkwood Highway corner Limestone Road 1966 & 2022





# Kirkwood Highway cor Duncan 1966 and 2022



This photograph shows a westward view of the Kirkwood Highway and Duncan Road intersection. The historic Hersey-Duncan House still stands at 2116 Duncan Road. Solomon Hersey died in 1801. His son Benjamin built the Federal-style home around 1804. Another Benjamin, Benjamin Duncan, acquired the property in 1839. The property was passed down to Herman Duncan, who operated a dairy farm, in 1907. One of Duncan's customers for milk was the Brandywine Springs Amusement Park. Shortly after World War II, Benjamin Duncan sold 84 acres to developers, who constructed the subdivision Dunlinden Acres.





# Kirkwood Highway 2007





# Kirkwood Highway 2012

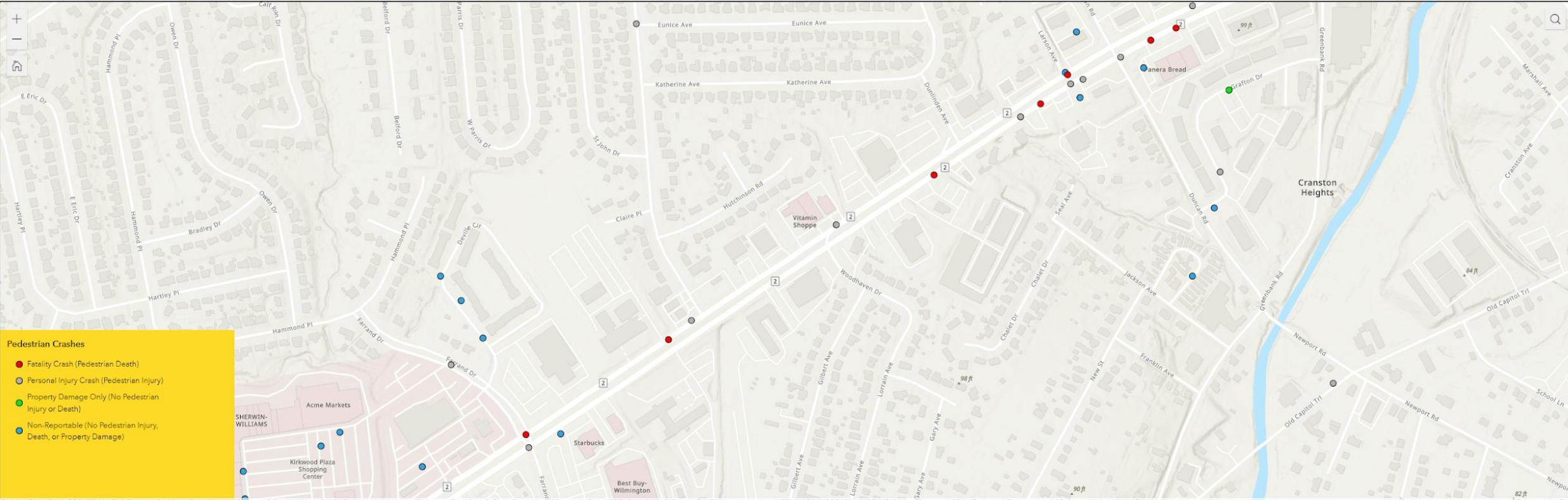




# Kirkwood Highway Pedestrian Crashes

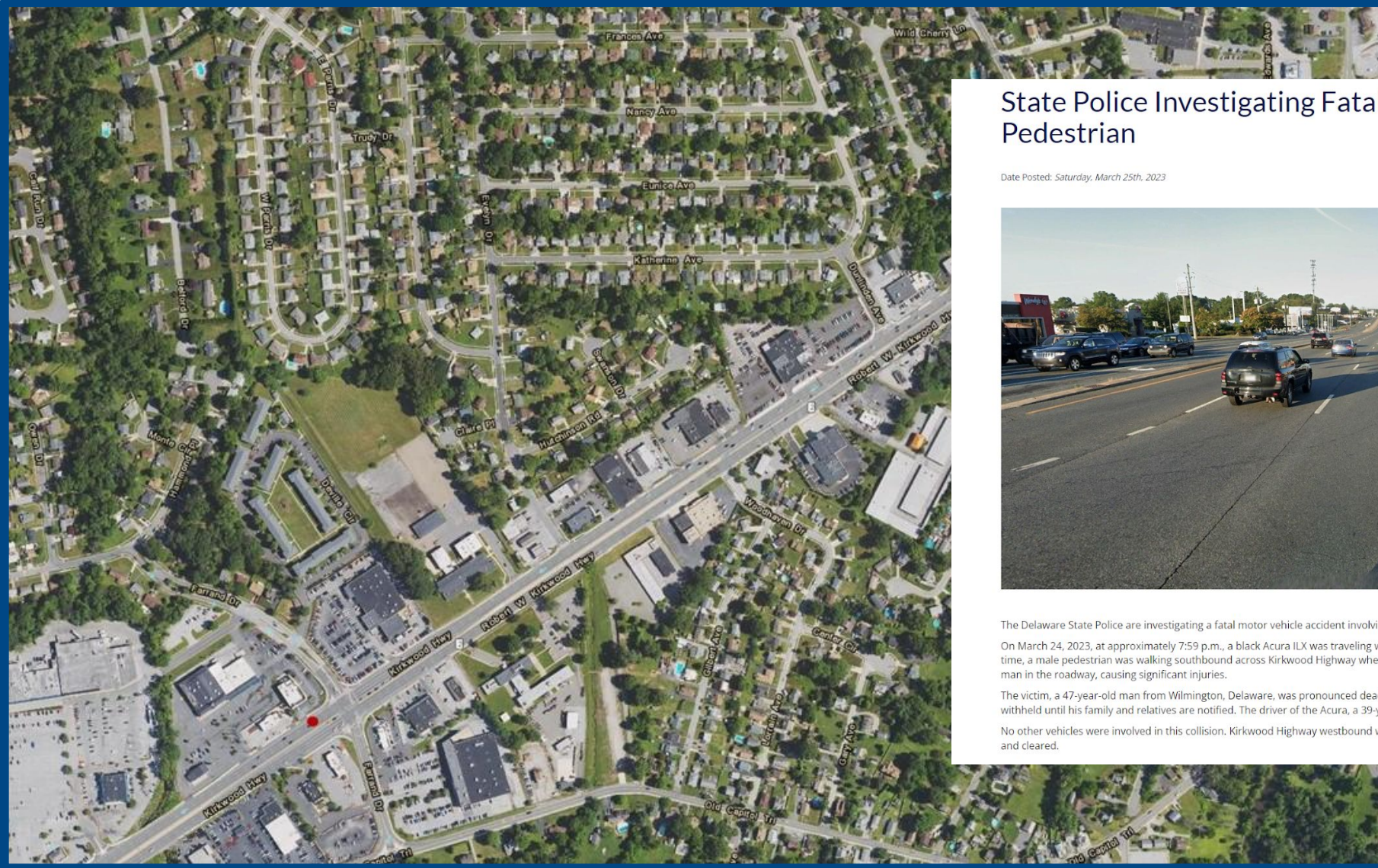


## New Castle County Pedestrian Crashes





# Kirkwood Highway Pedestrian Crashes



## State Police Investigating Fatal Accident Involving a Pedestrian

Date Posted: Saturday, March 25th, 2023



The Delaware State Police are investigating a fatal motor vehicle accident involving a pedestrian that occurred last night in Wilmington.

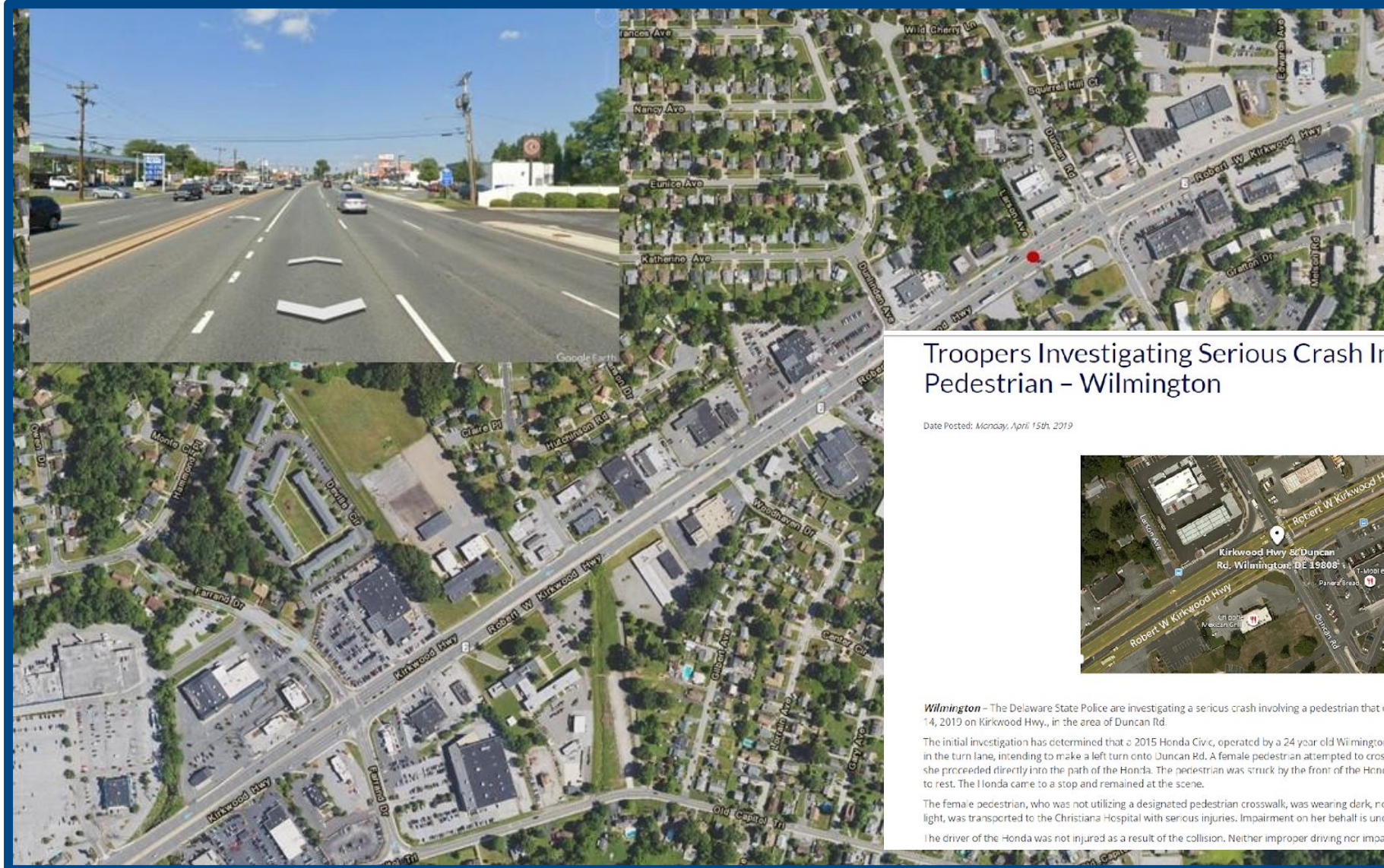
On March 24, 2023, at approximately 7:59 p.m., a black Acura ILX was traveling westbound on Kirkwood Highway west of Farrand Drive. At the same time, a male pedestrian was walking southbound across Kirkwood Highway when he entered into the path of the Acura. As a result, the Acura struck the man in the roadway, causing significant injuries.

The victim, a 47-year-old man from Wilmington, Delaware, was pronounced dead while he was being taken to an area hospital. His name is being withheld until his family and relatives are notified. The driver of the Acura, a 39-year-old woman from Newark, Delaware, was not injured.

No other vehicles were involved in this collision. Kirkwood Highway westbound was closed for approximately two hours while the scene was investigated and cleared.

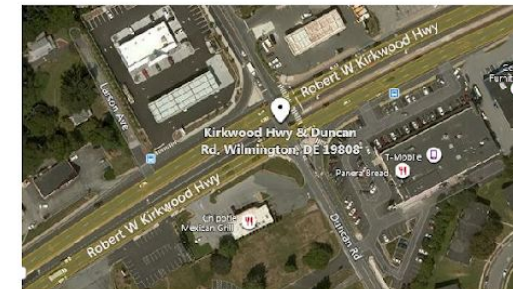


# Kirkwood Highway Pedestrian Crashes



## Troopers Investigating Serious Crash Involving a Pedestrian – Wilmington

Date Posted: Monday, April 15th, 2019



**Wilmington** – The Delaware State Police are investigating a serious crash involving a pedestrian that occurred at approximately 9:51 p.m., Sunday, April 14, 2019 on Kirkwood Hwy., in the area of Duncan Rd.

The initial investigation has determined that a 2015 Honda Civic, operated by a 24 year old Wilmington man was travelling eastbound on Kirkwood Hwy., in the turn lane, intending to make a left turn onto Duncan Rd. A female pedestrian attempted to cross Kirkwood Hwy. from the south to the north when she proceeded directly into the path of the Honda. The pedestrian was struck by the front of the Honda and then thrown to the pavement before coming to rest. The Honda came to a stop and remained at the scene.

The female pedestrian, who was not utilizing a designated pedestrian crosswalk, was wearing dark, non-reflective clothing and was not in possession of a light, was transported to the Christiana Hospital with serious injuries. Impairment on her behalf is undetermined at this time.

The driver of the Honda was not injured as a result of the collision. Neither improper driving nor impairment are a contributing factor on his behalf.



# Kirkwood Highway





# Delaware Pedestrian Action Plan

**Purpose:** Update the 2007 Delaware Pedestrian Action Plan.

## Phase 1 (Draft Finalized)

- Collect and summarize existing pedestrian plans and DeIDOT initiatives.
- Began pedestrian crash cluster and connectivity mapping.
- Develop project website.
- Began Public Involvement.

## Phase 2 (Underway now)

- Public outreach.
- Internal DeIDOT coordination to explore changes to programs and policies.
- Additional pedestrian crash cluster, connectivity and **equity** mapping.

## Phase 3 (To begin Fall 2023)

- Implementation plan with potential new action items, countermeasures, policies, or programs to improve ped connectivity and safety.
- Additional Public and stakeholder outreach.
- Establish performance measures.



# Following FHWA Guidance:

## How to Develop a Pedestrian Safety Action Plan

### FHWA Pedestrian Safety Action Plan “Big Picture” Approach:

**Phase 1** >>> • Collecting Data to Identify Pedestrian Safety Problems ✓

**Phase** >>> • Involve Stakeholders ✓

**Phase** >>> • Analyze Information and Prioritize Concerns

**Phase** >>> • Identify Safety Solutions

**Phase** >>> • Identify Funding

3

### FHWA Pedestrian Safety Action Plan steps:

**Phase 1** >>> **Step 1:** Define Objectives. ✓

**Phase 1** >>> **Step 2:** Identify Locations.

**Phase** >>> **Step 3:** Select Countermeasures.

**Phase** >>> **Step 4:** Develop an Implementation Strategy.

**Phase** >>> **Step 5:** Institutionalize Changes to Planning and Design Standards.

**Phase** >>> **Step 6:** Consider Land Use, Zoning and Site Design Issues.

**Phase** >>> **Step 7:** Reinforce Commitment.

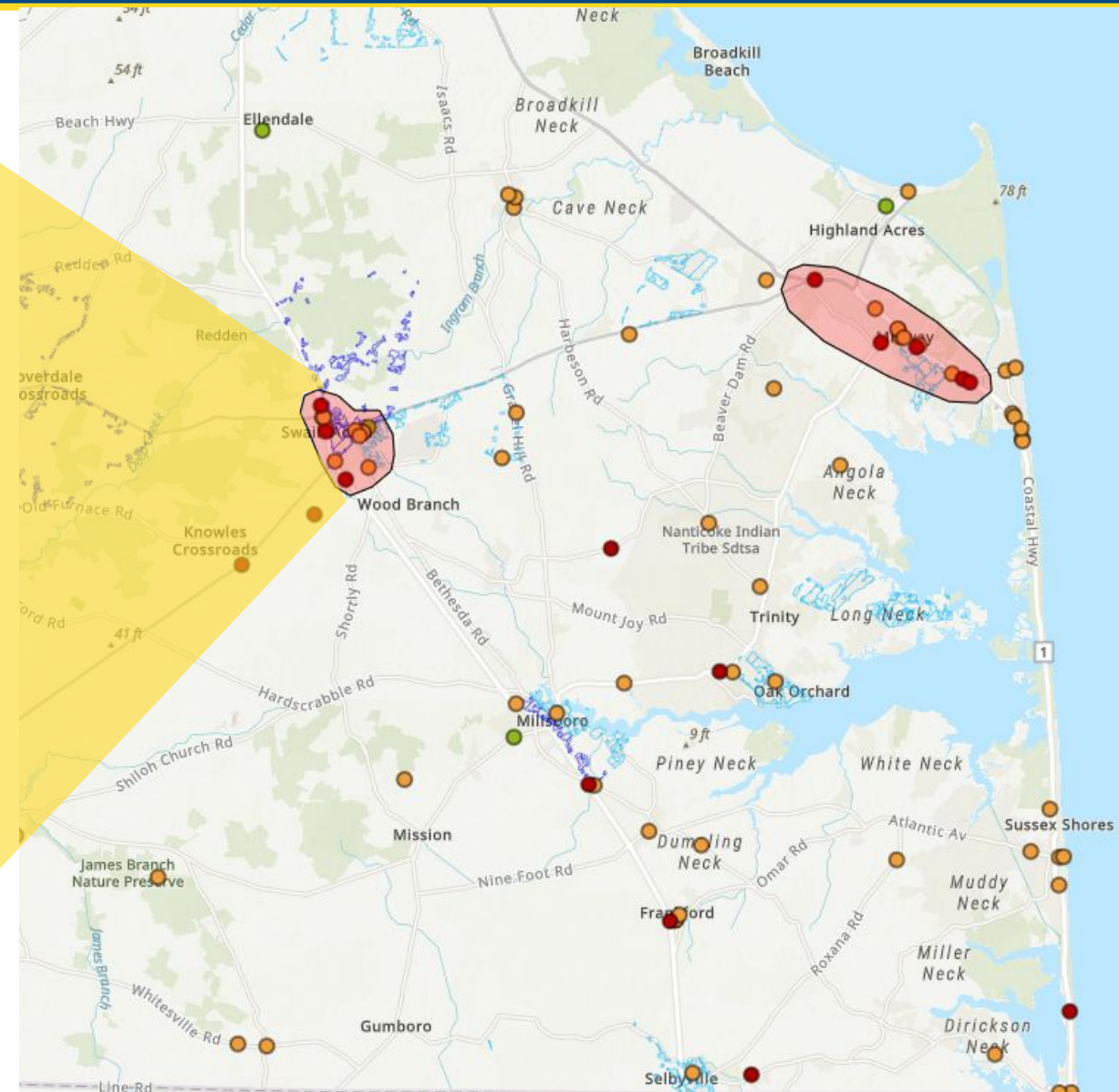
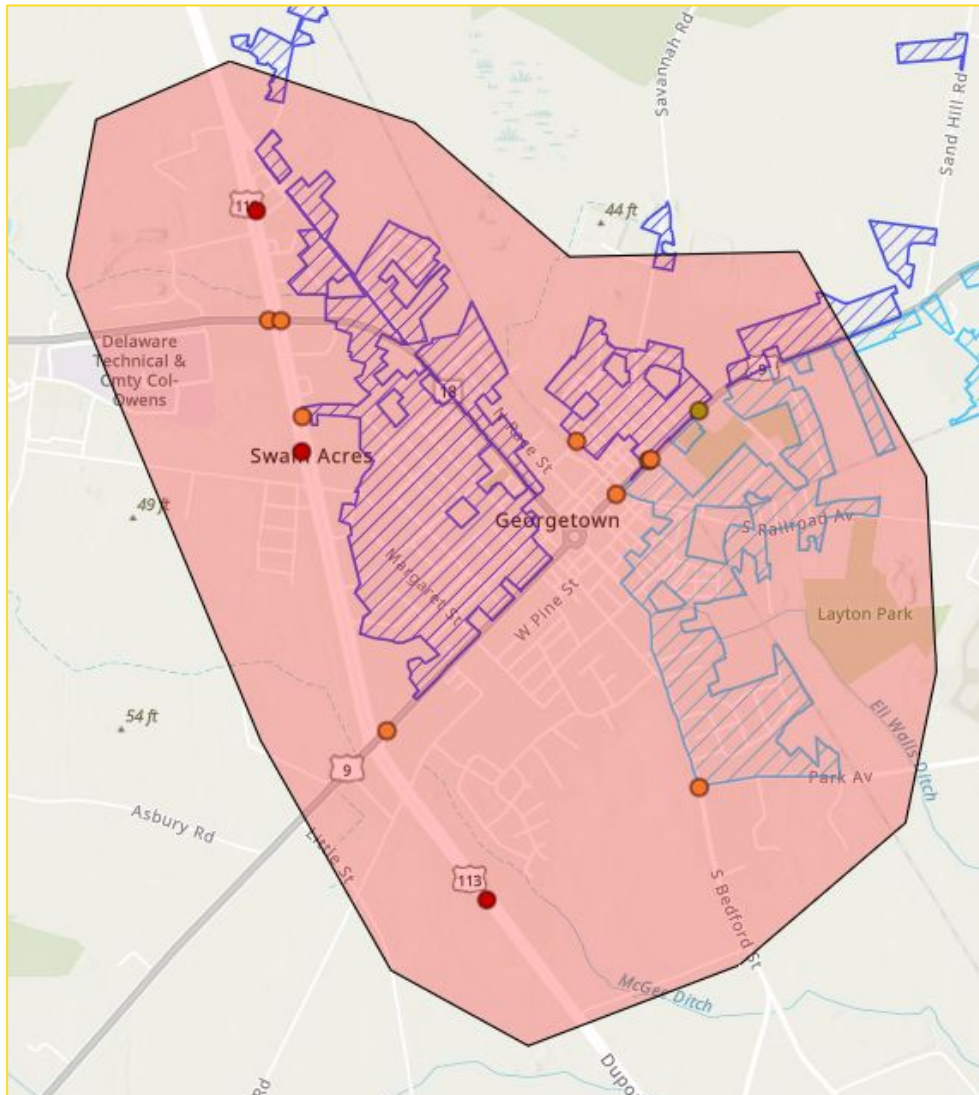
**3 Ongoing** >>> **Step 8:** Evaluate Results.



Included in 2007 Pedestrian Action Plan



# Strategic Public Outreach







# TAKE THE PUBLIC SURVEY NOW!



Delaware has  
one of the  
highest rates  
of pedestrian  
fatalities in  
the nation,  
accounting  
for 24% of all  
fatal crashes  
statewide.

According to 2015-2021 data



Help us reverse this trend!





# Emerging Focus Areas

- **Better integration of programs to implement more pedestrian safety and accessibility projects.**
- **Establish a pedestrian project priority area program.**
- **Establish pedestrian performance standards with measurable outcomes.**
- **Increase pedestrian safety audits and before / after studies.**
- **Pilot studies using Safe System concepts and traffic calming measures.**
- **Continual updates to design manuals and guides.**





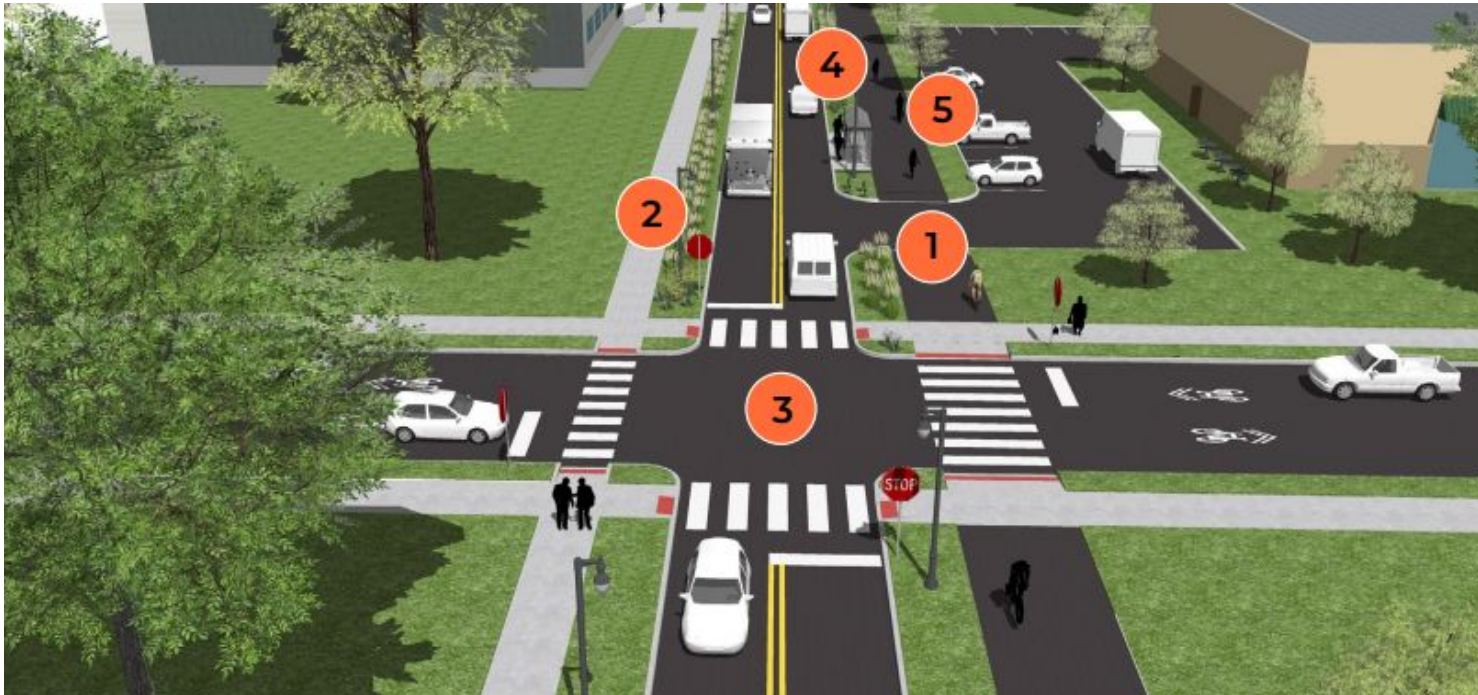
# DeIDOT Complete Streets Design Guide - DRAFT

## Website link:



## Send Comments to:

✉ [complete.streets@delaware.gov](mailto:complete.streets@delaware.gov)



## DeIDOT Complete Streets Design Guide



DRAFT March, 2023



# Thank you!

## **Maria Andaya**

Division of Planning -Delaware  
Department of Transportation

 302-760-2458

 [Maria.Andaya@delaware.gov](mailto:Maria.Andaya@delaware.gov)

## **Angie Hernandez, AICP**

Transportation Planning - JMT

 410-316-2393

 [Ahernandez@jmt.com](mailto:Ahernandez@jmt.com)